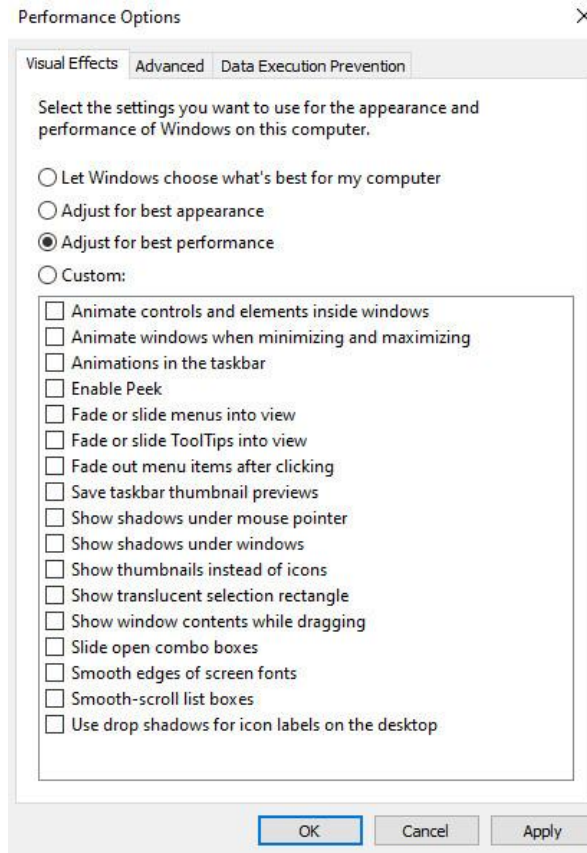
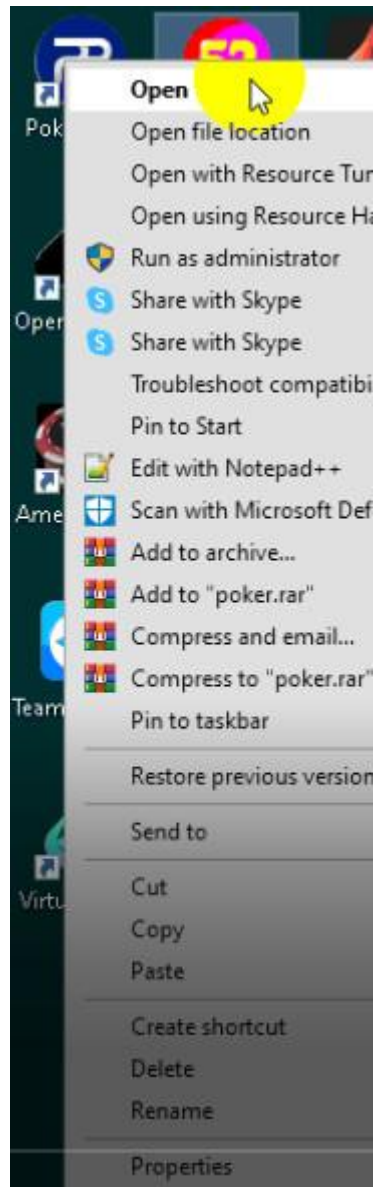


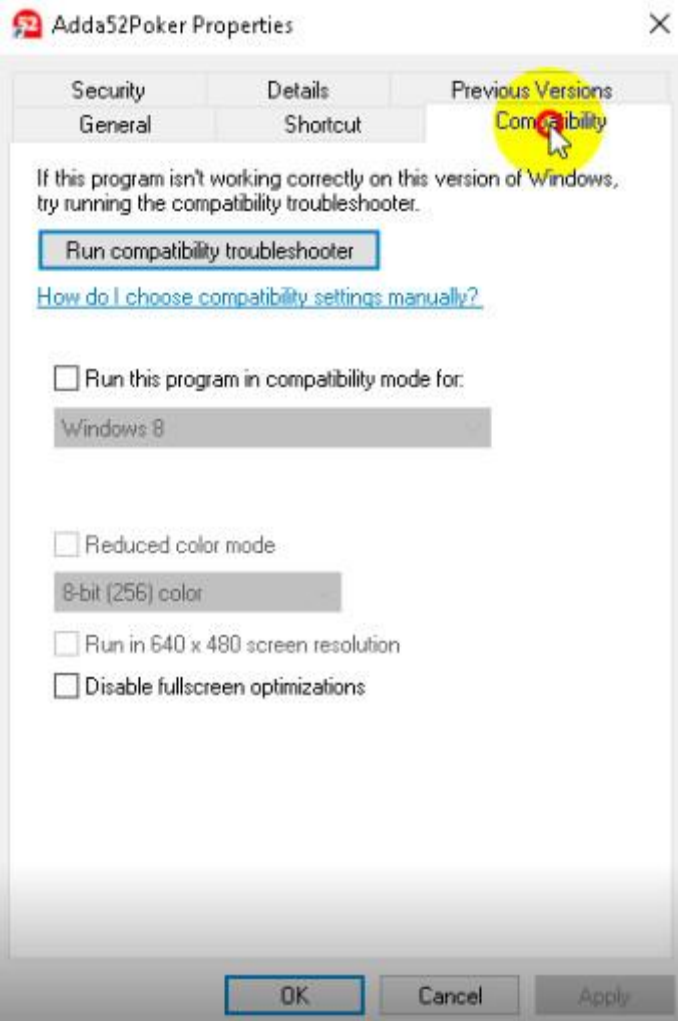
Adda54 Settings

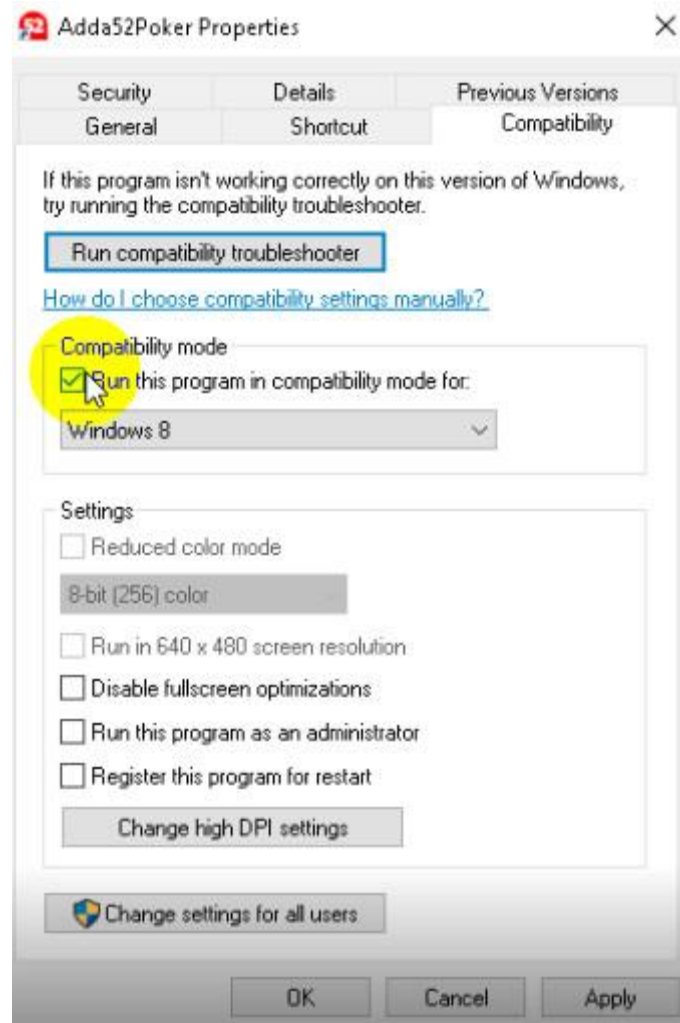
Before starting the poker room, configure the system:



**Launch poker room in Windows 8 environment !
You must do this before each start of the poker room.**



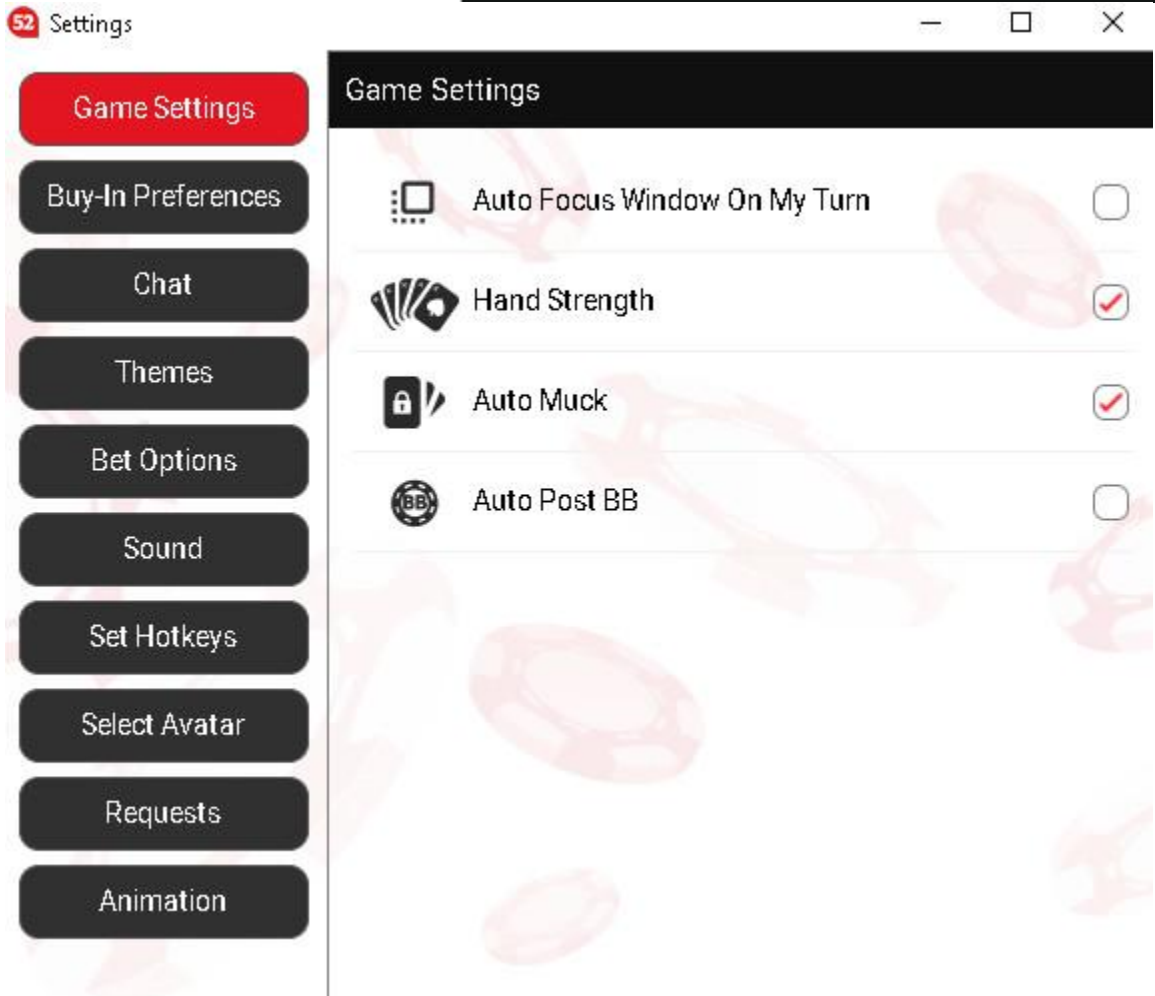




When the poker room is loaded, connect it to a new view.



Poker room settings:



- Game Settings
- Buy-In Preferences
- Chat
- Themes**
- Bet Options
- Sound
- Set Hotkeys
- Select Avatar
- Requests
- Animation

Themes

TABLES **CARDS**

Tables  ▼

Backgrounds  ▼



Final Table Theme (Tournament) ⓘ

APPLY

- Game Settings
- Buy-In Preferences
- Chat
- Themes**
- Bet Options
- Sound
- Set Hotkeys
- Select Avatar
- Requests
- Animation

Themes

- TABLES
- CARDS**



Classic Card



4 Color Deck



Full Color Gloss



APPLY

Game Settings

Buy-In Preferences

Chat

Themes

Bet Options

Sound

Set Hotkeys

Select Avatar

Requests

Animation

Bet Options

Incremental Adjustments

- Adjust bet size with the Big Blind
- Adjust bet size with the Small Blind

Shortcut Buttons above bet slider

Pre Flop

	x2	x3	x5	1/2	3/4	Pot	Max
1:			2				3
2:							
3:			5				
4:							
5:							
6:							
7:							

Post Flop

x2	x3	x5	1/2	3/4	Pot	Max
----	----	----	-----	-----	-----	-----

- Game Settings
- Buy-In Preferences
- Chat
- Themes
- Bet Options**
- Sound
- Set Hotkeys
- Select Avatar
- Requests
- Animation

Bet Options

3: BB/Call 5 4: Pot 1/2

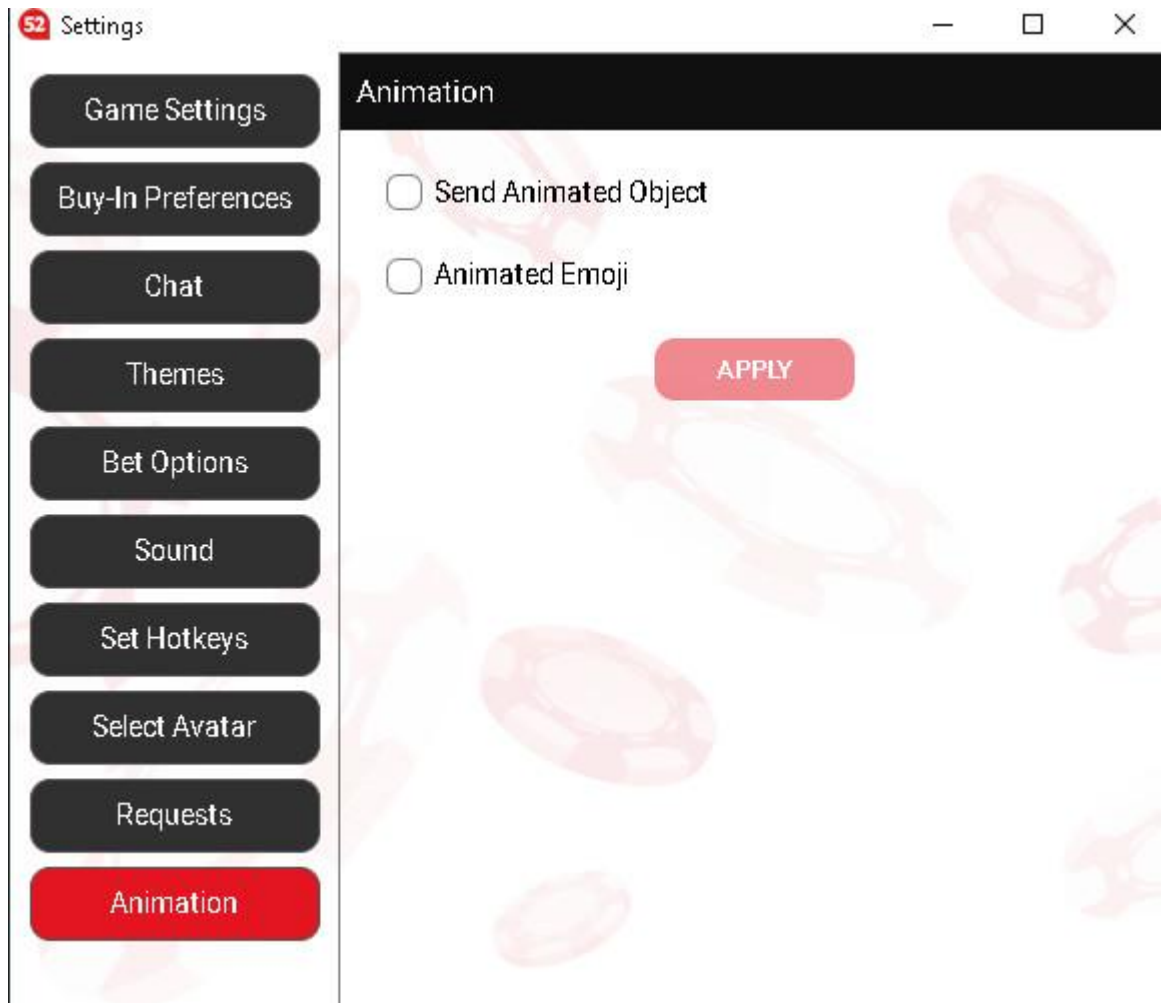
5: Pot 3/4 6: Pot

7: Max

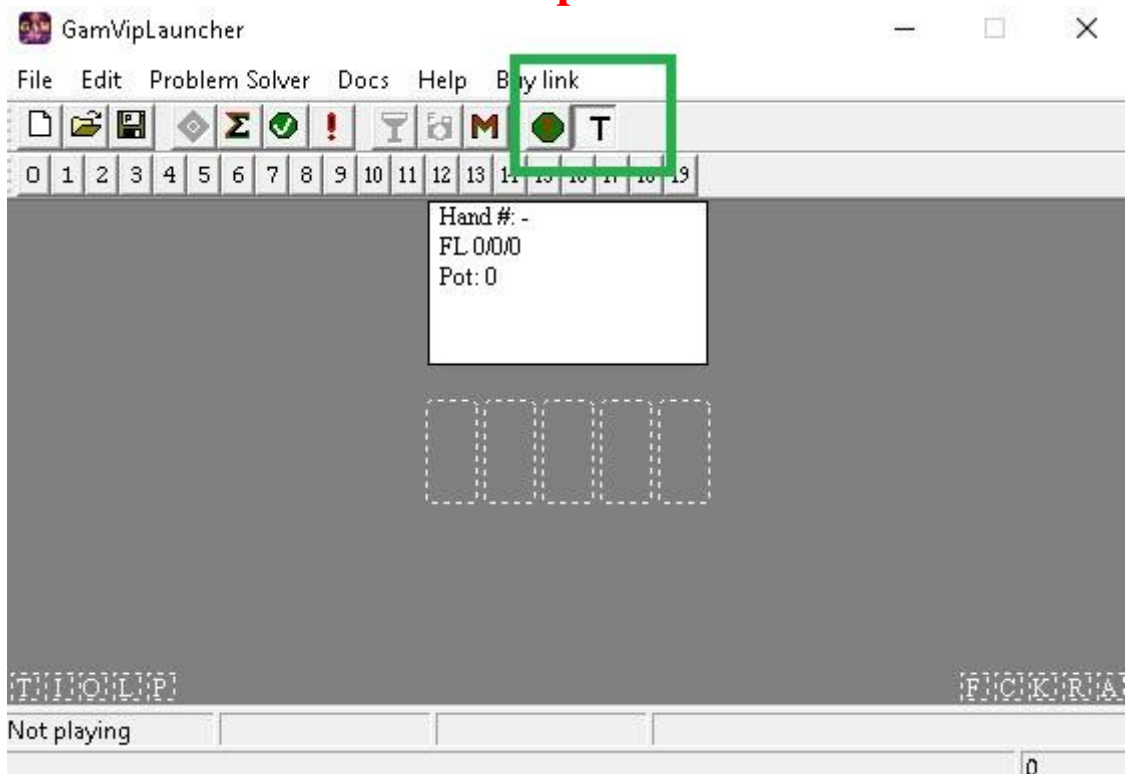
Post Flop

x2	x3	x5	1/2	3/4	Pot	Max
1	2	3	4	5	6	7
1: BB/Call	2	3: BB/Call	5	4: Pot 1/2	6: Pot	7: 3
5: Pot 3/4						
7: Max						

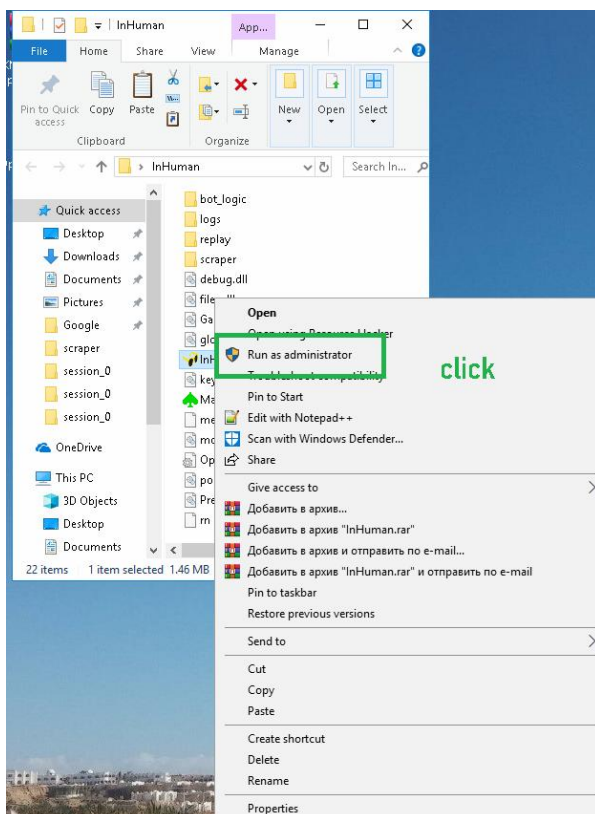
APPLY



Very important: If the small blind = 1 or more keep the T button pressed.



Run poker robot as administrator.



Download and unzip this tool. He will make the required table size. It is very important. Please run it as administrator just like a poker robot.

<http://www.mediafire.com/file/f5zf9w6ruym8dtk/ResizeADDA52.zip/file>